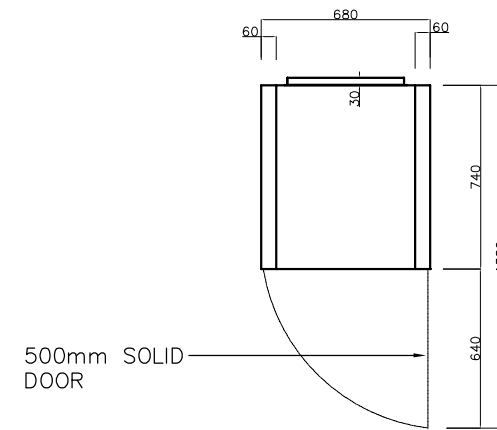
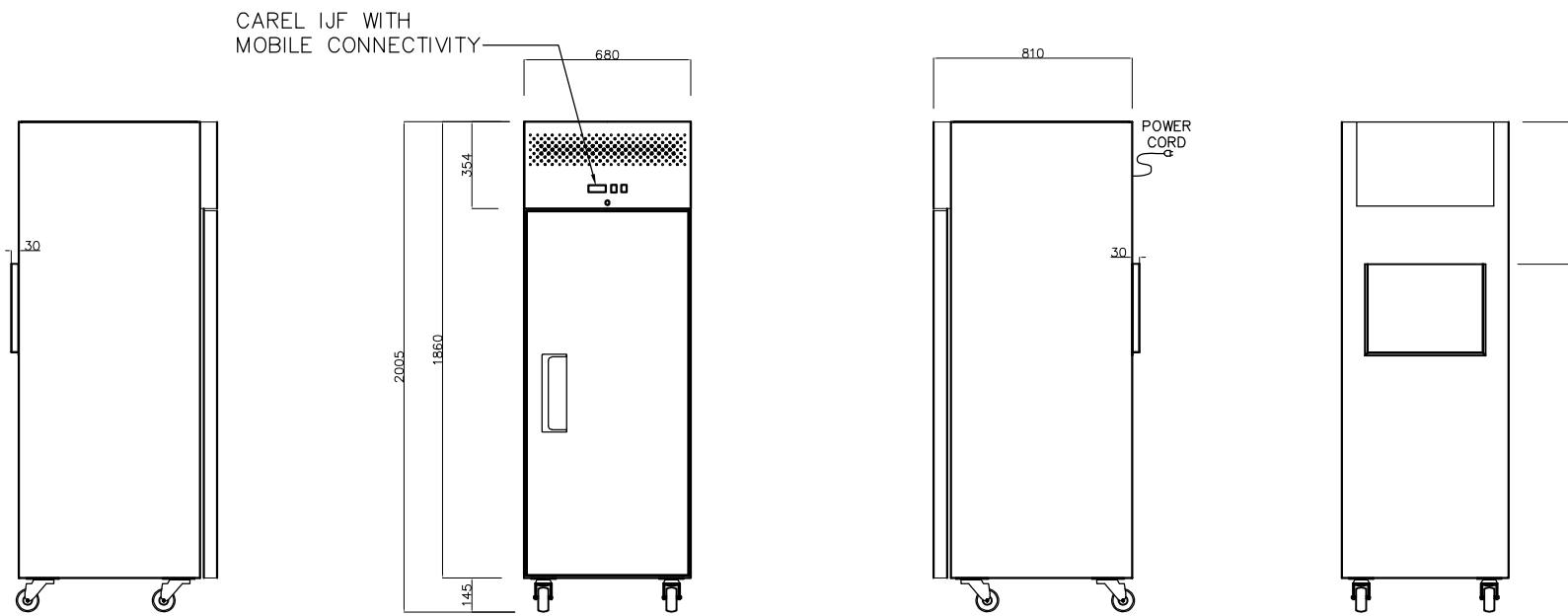




5-11 Garfield Street  
 Richmond Vic 3121  
 Phone: 03 9416 4667  
 Email: sales@agequipment.com.au  
 Website: www.agequipment.com.au



500mm SOLID DOOR



CABINET DIMENSIONS:

	EXTERNAL	INTERNAL
Width (mm)	680	564
Depth (mm)	810	682
Height (mm)	2010	1414
Floor Area(m <sup>2</sup> )	0.5508	

ELECTRICAL REQUIREMENTS

Electrical Power (W)	470
Electrical Voltage (V)	220-240
Electrical Ampere (A)	2.3
Electrical Frequency (Hz)	50

VENTILATION REQUIREMENTS  
 Ventilation will be required at the top of the appliance  $\geq$ 500mm.

DIMENSION TOLERANCES:  
 Allowances for cabinets are to be between -10mm to +10mm unless noted otherwise

MODEL:  
**GNX600BT**

DESCRIPTION:  
 600L Upright Single Stainless Steel Door Freezer